



maritime personal assistant

Tijssen Elektro
 Kanaalstraat 37
 5347 KM Oss
 The Netherlands
 T:+31 412 622778
 F:+31 412 623928
 info@tijssen-elektro.nl
 www.tijssen-elektro.nl

Tijssen Elektro Zeeland
 Deltastraat 11
 4301 RC Zierikzee
 The Netherlands
 T:+31 111 698510
 F:+31 111 698519
 infotez@tijssen-elektro.nl
 www.tijssen-elektro.nl



Maritime Personal Assistant (MPA)[®]

MPA is the innovative integration of all technical systems needed to make a yacht perform: from engine operation and on board electronics to navigation and communication systems. Developed by a single developer, MPA integrates all these disciplines into a single uniform and easily manageable entity. MPA means electronic interaction at the highest level, resulting in minimum likelihood of disturbance and maximum probability of outstanding performance.

Monitoring a yacht's performance and safety

MPA facilitates monitoring a yacht's performance and safety by providing all the ship's information. The system controls and/or secures, for example, power control, the battery system, the tank sounding system, alarm systems, generator control, the hydraulic system, freshwater and air pressure, fire-fighting systems, deck and navigation lights, camera systems, navigation pages and doors and hatches. Using internet or satellite communication, MPA and a laptop suffice to monitor your ship whenever and wherever you want.

Complete logging

Maintaining a thorough logging is essential to modern shiping. MPA reproduces all relevant data, in whatever form you need them, such as bunkering data, maintenance data, navigation data and everything else you wish to know. Its operation is simple and purely functional. The advanced linking of various files and programs, together with an updated menu structure, make communications transparent and clear as an audit report. And just as accurate.

e-Drawing and TX message

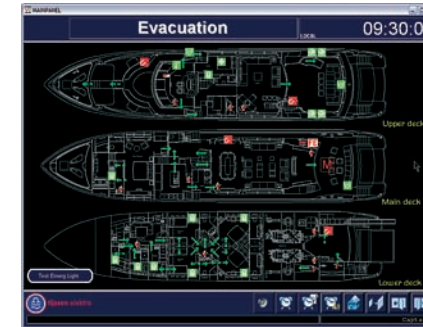
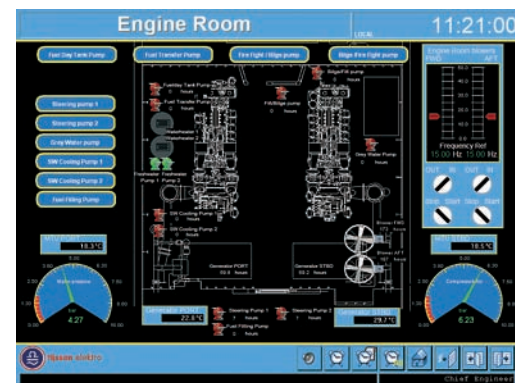
MPA produces diagrams of all systems that can be consulted in PDF format. Thus it meets your needs in carrying out – preventive – maintenance and consulting installation data. The up-to-date diagrams are very clear, there is no risk of damage or loss and they can be printed at every workstation. Moreover, MPA remains alert, even when the ship is unmanned. In the event of technical failure or alarms, for example, MPA sends a pre-programmed text message to one or more GSM phones allowing prompt action if necessary.

Help-application

The MPA system has recently been extended and optimised with a help application. When the MPA system detects a technical failure and sounds the alarm, the help application shows a screen suggesting a remedy for the detected failure. The application then offers the possibility to consult logging for details on the origin of the failure. This help application helps to remedy technical failures more efficiently and more effectively.

LAN network

The MPA units are distributed throughout the entire yacht, with two central places: the main panel and the wheelhouse dashboard. All units are linked into a LAN network, called MPA network, which is fully separated from the yacht's or the owner's network. Additional workstations can be installed in the captain's or engineer's cabin and crew mess. Moreover, for the crew's convenience, multimedia such as Internet, audio, video or satellite TV applications can also be linked into the MPA system, making a full entertainment program available.

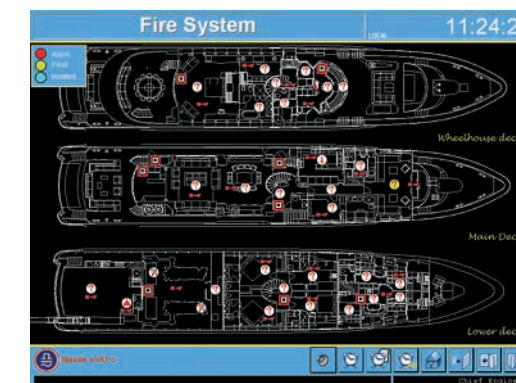


Savings

With complete integration of technology, huge savings in cabling and space in and on the control console can be realized. Today, a lot of functionality, previously only available in the engine room, is now added to the wheelhouse. With the latest data transfer and computer LAN network technologies, a single Cat 5 cable can transfer all data within the MPA system, from the wheelhouse to the main cabinet and to other places. Further slave displays can be connected into the MPA system, bringing all functionality and information, wherever and whenever needed, within reach.

Certainty, flexibility and functional freedom

MPA offers certainty, flexibility and functional freedom, not only to its user, but also to designers and shipbuilders. Designing a ship is all about ideas, and pursuing the delicate balance between form and function, and between technology and feeling. This requires an environment without restrictions. MPA offers just that. It enables the designer to create freely, without having to bother about technical imperfections. MPA allows the builder to realize the designer's ideas: if it is possible in theory, it can be done with MPA. A reassuring thought if the design is to come to life. This is, after all, what functional freedom is all about.



Innovative integration

Building a ship is a process of fitting together materials and techniques into the ideas of the designer and the dream of the future owner. This requires special skills and workmanship and a complete confidence in the materials and techniques used. MPA integrates all technical processes into a single innovative system, developed by a single developer. Therefore, all materials and techniques are perfectly geared to each other. No artificial connections, no improvised links, but a thoroughly tested and flexible system, specially designed for that one purpose: providing a reliable solution for a truly complicated process.

Complete control

Enjoying a ship is the ultimate goal of building one. No greater feeling than stepping aboard and leaving the shore. It is the freedom of the open air, new horizons and total relaxation. Maximum enjoyment, however, requires more than a cloudless sky. It requires a perfectly performing ship that is under the complete control of the captain and his crew. This is what MPA affords. As all technical applications are integrated into one uniform system, the likelihood technical failure is reduced to a minimum. Moreover, the system is always at the owner's disposal: whenever, wherever. Maximum enjoyment guaranteed.

Long distance service

Although Tijssen Elektro do their utmost to design and install outstanding and state-of-the-art technical systems, it is as yet impossible to avoid all technical problems. Therefore, the MPA service team is always at your disposal, no matter where you are. Through a thoroughly secured connection, our experienced professionals can access your complete system. Technical maintenance or installation of software updates is carried out without you having to worry about it.